

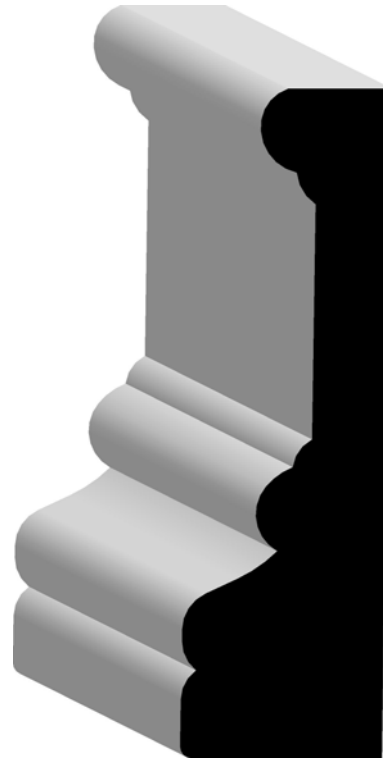


SPECIALTY WOOD
WORKS OF PEORIA, INC.

1311 S.W. Adams St., Suite C • Peoria, IL 61602

Ph: (309)671-9450 • Fx: (309)671-9452

www.woodworksofpeoria.com



Product Group: Case Molding

Part Number

Dimensions

(shown above)

C41-308-17

1-1/16" x 3-1/2"